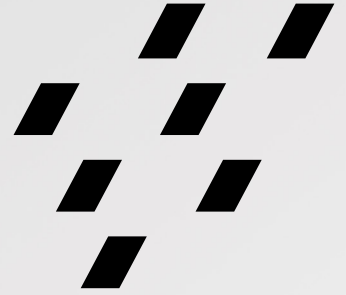


G-æniel Flo X
G-æniel Universal Flo

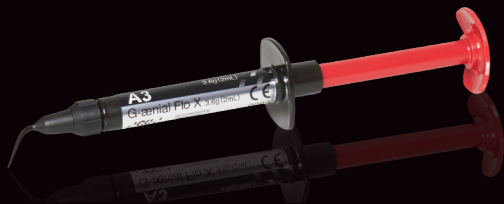
Strong universal
composites with
beautiful flow.

Pure genius.



./GC./

GC innovation now gives you two options in high strength¹ universal composites that flow.



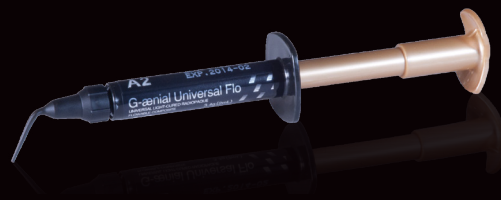
G-ænial Flo X

A full strength flowable composite for traditional flowable applications

Perfect for:



- > High radiopacity¹
- > Excellent wetting and adaptation
- > A lower viscosity, ideally suited for liner applications



G-ænial Universal Flo

A full strength, universal, injectable composite for all cavity classifications

Perfect for:



- > Highly aesthetic
- > Exceptional wear resistance²
- > Unmatched polish retention²
- > Controlled fluidity



Through filler innovation, both G-ænial Flo X and G-ænial Universal Flo deliver similar high levels of strength², while offering different viscosities tuned to the variation in composite handling preferences of individual clinicians.

G-ænial Flo X

G-ænial Flo X is a high radiopacity and high strength flowable composite, designed specifically for optimum handling in lining, micro cavity and fissure sealing applications. The best handling “conventional” flowable – yet with greater strength than most conventional composites.¹

A flowable with impressive strength¹

Innovation in filler technology gives you a high strength composite in a flowable consistency. Designed to be strong enough for application in any classification of cavity.

High radiopacity¹

Perfect for defining the cavity outline in radiographic images for direct or indirect procedures. G-ænial Flo X shows one of the highest levels of radiopacity among flowable composites at 303%AI.

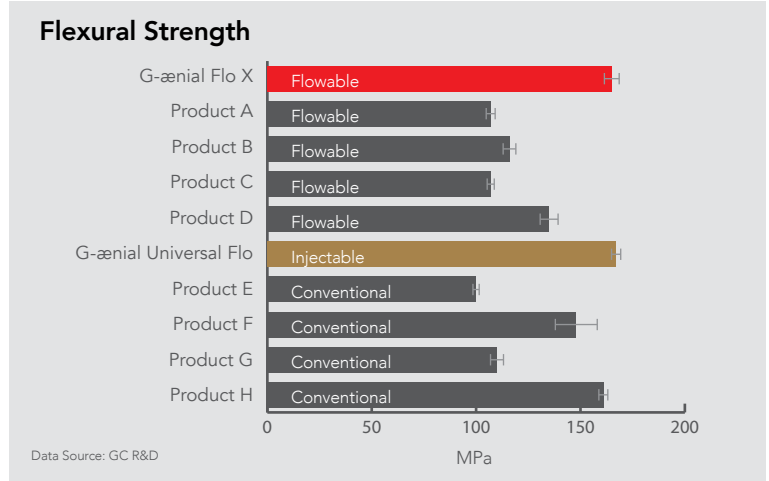
Enhanced fluidity – ideal handling for lining application

G-ænial Flo X gives you total control over the flow. It's designed to wet and adapt yet maintain control for complete ease of application.

You will love the handling!



¹Tanaka H, Ueno T, Arita A, Kumagai T (2014). Property of new flowable composite resin with high radiopacity. J Dent Res Vol 93 (Spec Iss C) (ANZ Division) <https://iadr.abstractarchives.com/abstract/anz14-193579/property-of-new-flowable-composite-resin-with-high-radiopacity>



Radiopacity

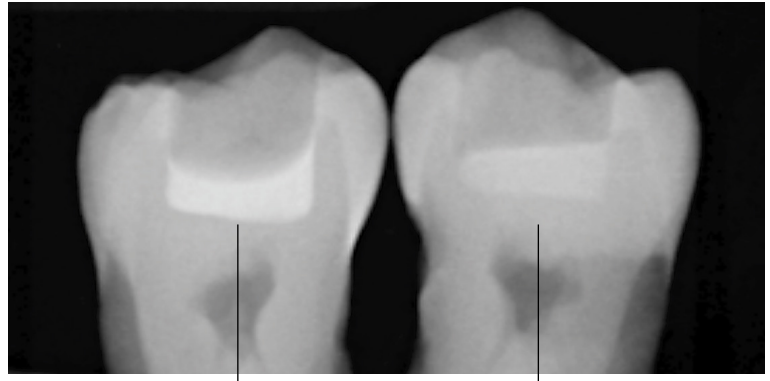


Image courtesy of Dr Joanna Wyszynski – Sydney

G-ænial Flo X
303%AI¹

Product D
201%AI (based on data from
IADR abstract)

G-ænial Universal Flo

G-ænial Universal Flo is a ground-breaking injectable composite that is stronger and more wear resistant than most conventional composites². It is highly aesthetic through excellent shade matching and colour stability, and then polishes easily to give a high gloss lustre that retains its beauty, just like a microfill.

Impressive aesthetics

The aesthetics of G-ænial Universal Flo are very impressive. Thanks to its broad range of 15 shades, highly aesthetic restorations can be achieved using single shade or layered techniques.

Superior polish retention

G-ænial Universal Flo gives you and your patients the highest levels of aesthetic outcome, with a beautiful high gloss finish and excellent gloss retention.

True technology innovation

A new formulation of high translucency strontium glass was developed with an incredibly fine 200 nanometre particle size; half the size of previous generations of glass fillers used in micro hybrid composites!

Controlled fluidity

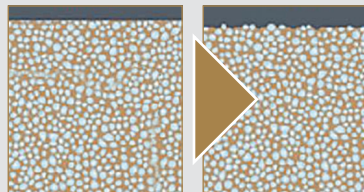
Injects like a flowable, yet will stack like a traditional composite.

² N. Sumino et al. (2013). Comparison of the wear and flexural characteristics of flowable resin composites for posterior lesions. Acta Odontol Scand. 2013 May-Jul; 71(3-4):820-7.



Image courtesy of Dr M Okaguchi – Tokyo

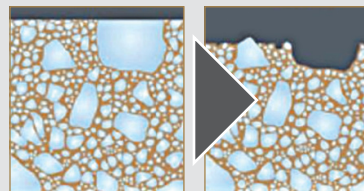
Polish retention and wear resistance



After polishing

After wear

Individually dispersed nano sized fillers used in G-ænial Universal Flo provide greater wear resistance.² In addition, a new silane treatment increases the strength and stability of adhesion between glass particles and resin matrix.



After polishing

After wear

Macro fillers (e.g. Grandio Flow[®]) and clumped nano filler composites (e.g. Supreme Flow[®]) exhibit higher wear.



Questions and Answers

Q. I am having great success with G-ænial Universal Flo. In what situations would I consider using G-ænial Flo X?

A. G-ænial Universal Flo is a remarkable composite in that it is so strong² and aesthetic, yet it's an injectable composite with a degree of flow during application and is thixotropic enough to be stacked and shaped.

G-ænial Flo X has the same strength as G-ænial Universal Flo but offers a higher level of flow during application, with handling more like a conventional flowable composite. Therefore its benefit comes in clinical situations where you would like more flow. G-ænial Flo X also has a high level of radiopacity², so it is indicated where strong radiographic identification is a priority. Both materials have excellent aesthetics and are made using advanced manufacturing techniques that ensure a high level of quality and performance.

Q. How do G-ænial Universal Flo and G-ænial Flo X compare in their filler composition?

A. G-ænial Flo X is 69% filled by weight, 46% filled by volume. It has an average particle size of 700nm
G-ænial Universal Flo is 69% filled by weight, 50% filled by volume. It has an average particle size of 200nm.

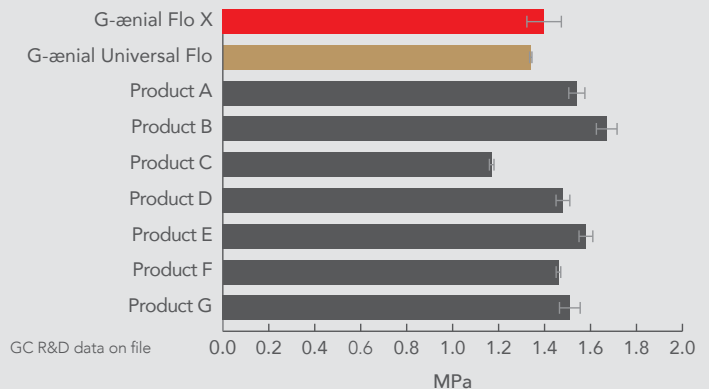
Q. Are G-ænial Universal Flo and G-ænial Flo X suitable for restorations in any cavity classification?

A. Yes, G-ænial Universal Flo and G-ænial Flo X have exceptional flexural strength, surpassing most other conventional composites.²

Q. How does the level of shrinkage stress compare to other composite materials?

A. Due to their lower modulus of elasticity, traditional flowable composite materials have tended to exhibit lower polymerisation shrinkage stress. G-ænial Flo X has a similar level of shrinkage stress.

Polymerisation Shrinkage Stress



Q. What is the resin used in G-ænial Flo X and is it compatible with other UDMA and Bis-GMA based composites?

A. The resin used in G-ænial Flo X is Bis-MEPP, a modification of Bis-GMA, which is compatible with UDMA and Bis-GMA.

Q. What are the recommended curing times for G-ænial Flo X?

A. Using a Halogen or LED light with output of 700 mW/cm² will give a 2mm depth of cure for shades A1, A2 and A3. It will give a 1.5mm depth of cure for shade AO2.

Q. What is the level of radiopacity for G-ænial Flo X?

A. In a 1mm thickness it is 303%Al.¹

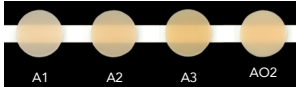
GC Universal Composites

G-ænial Flo X

3.6g (2.0ml) syringe, 20 dispensing tips

Dispensing Tip III refill 30pcs

Available in 4 shades: A1, A2, A3, Opaque AO2



G-ænial Universal Flo

Standard:

A1, A2, A3, A3.5, A4, BW, B1, B2, B3, C3, CV

Inside (Opaque):

A02, A03

Outside (Enamel):

AE, JE

G-ænial Universal Injectable

Standard:

XBW, BW, A1, A2, A3, A3.5, A4, B1, B2, CV, CVD

Inside shade:

AO1, AO2, AO3

Outside shade:

JE, AE

G-ænial ANTERIOR

Standard:

XBW, BW, A1, A2, A3, A3.5 A4, B1, B2, B3, C3, CV, CVD

Inside special:

AO2, AO3, AO4

Outside special:

JE, AE, SE, IE, TE, CVE

G-ænial POSTERIOR

Standard:

P-A1, P-A2, P-A3, P-A3.5

Outside special:

P-JE, P-IE

G-ænial A'CHORD

Standard:

BW, A1, A2, A3, A3.5, A4, A5, A6

Inside special:

A01, A02, A03, B01

Outside special:

JE, AE

This product is not available for purchase by the general public. Always read the label and follow the directions for use.



GC Australasia Dental Pty Ltd
1753 Botany Road, Banksmeadow,
NSW 2019, Australia

T: +61 2 9301 8200
E: info.australasia@gc.dental
www.gcaustralasia.com